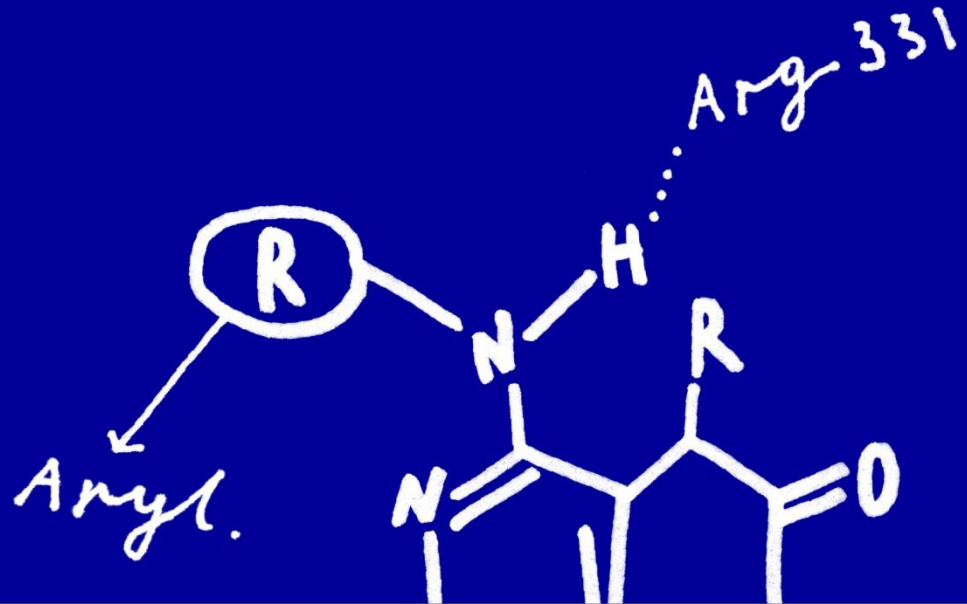




Antibody Discovery at Evotec

- Overview -



Adding value to our partners' research

Innovative and flexible solutions from target ID to pre-clinical candidate

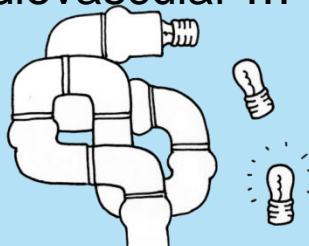
The people

Outstanding scientists (~800)
Experienced project management



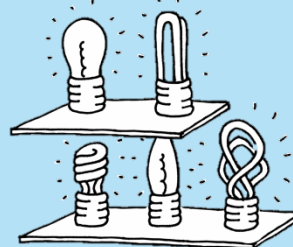
A wide therapeutic area expertise

Pain, oncology, CNS, diabetes & diabetes complications, immunology, infection, inflammation, cardiovascular ...



Integrated drug discovery

State-of-the-art capabilities
Best-in-class technology platforms



Flexible deal structures

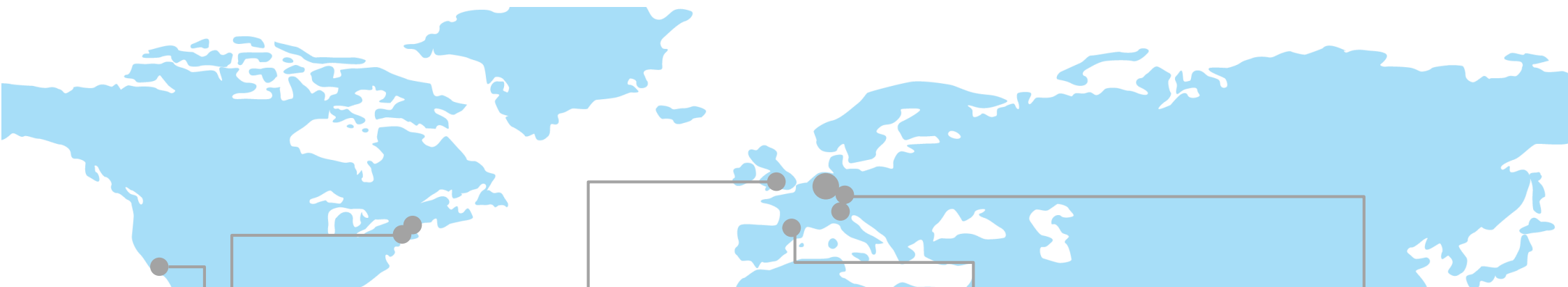
Integrated collaborations and stand-alone services



A world-class drug discovery expertise and platform to accelerate and maximise our partners' success

A global company with a complete offering

Evotec's worldwide operations



San Francisco, Branford and Princeton, USA

~65 employees

- Compound ID, selection and acquisition
- Compound QC, storage and distribution
- Cell & Protein production

Abingdon and Manchester, UK

~280 employees

- Medicinal chemistry
- ADMET
- Structural biology
- *In vitro* & *in vivo* Anti-infective platform/ screening

Toulouse, FRANCE

~200 employees

- Compound management
- Hit identification
- *In vitro* & *in vivo* oncology
- Medicinal chemistry
- ADME & PK
- Early Drug Formulation & Solid form screening
- Cell, protein & antibody production

Hamburg (HQ), Göttingen and Munich, GERMANY

~375 employees

- Hit identification
- Antibody discovery
- *In vitro* & *in vivo* biology
- Chemical proteomics & Biomarker discovery and validation
- Cell production



Antibody services

An integrated platform for generation of therapeutic antibodies

1 Industry-proven team for therapeutic antibody generation:
from stand-alone projects to integrated programmes

2 Extensive expertise in therapeutic focus areas:
oncology, pain & inflammation, infectious diseases, diabetes & diabetes complications, CNS

3 Workflows include:

- Immunisations with hybridoma and B-cell-based antibody generation
- Custom cell and protein production
- Binding assays and functional screening
- Antibody production from high-throughput to large-scale
- Biophysical characterisation
- Epitope mapping, structural and computational biology
- *In vivo* studies including histology and biomarker discovery

4 Integrated teams, fast project turn-around time, single point of contact, focus on communication and delivery



Evotec medical biology departments

Critical mass and scientific experience

In vitro biology

- Target identification & validation
- Assay development & target class expertise
- Translational Biomarkers
- Key technologies platforms:
 - Ion channels / Electrophysiology
 - High-content screening
 - Microbiological phenotypic screening
- Disease know-how:
 - Metabolic disease & complications, CNS, pain, inflammation, oncology, infection

Lead discovery

- Antibody generation and characterisation (therapeutics and tools)
- Cell and protein production
- Assay development and target class expertise
- Hit identification: HTS / FBS / HCS
- Hit profiling and validation
- Structure biology
- Quantitative proteomics
- Key technology platforms: EVOScreen, LC-MS, NMR / Biacore, RT-qPCR screening

In vivo pharmacology

- Target identification and validation
- *In vivo* efficacy studies, PK and PKPD
- Small molecules, antibodies, vaccines, siRNA, and combinations
- Genetic disease models
- Motor, behavioural and cognitive read-outs
- Acute and chronic studies
- Substantial experience with acute and chronic models for CNS diseases, pain, metabolic diseases & complications, infection

- Critical mass of scientific staff: ~430 FTEs (30% PhDs)
- Substantial industrial and drug discovery experience throughout the company
- Good combination of Pharma, biotech and academic background

Significant capacity and experience in driving integrated drug discovery projects



For further information
and inquiries please contact us.

Your contact:

info@evotec.com

